

# Aetherize

Flaming Pear Software

[What it does](#)

[How to install](#)

[Quick start](#)

[Blur](#)

[Hues](#)

[Colorize](#)

[Dreaminess](#)

[Haze](#)

[Things to Try](#)

[Other controls](#)

[Memory dots](#)

[Hints](#)

[Versions](#)

[How to purchase](#)

[Questions](#)



## What it does

Aetherize produces dreamy, gauzy, or surreally colored images from photographs. It can add subtle variations of hue or extreme colors. The best results come from photographs, but it can soften flat-color graphics too.

## How to install

Illustrated installation instructions are online at [www.flamingpear.com/faq.html](http://www.flamingpear.com/faq.html) .

To use this software, you need to install it into Photoshop.

Just drag the plug-in filter into the folder where Photoshop expects to find it. On OS X, it will be similar to Applications/Adobe Photoshop/Plug-ins.

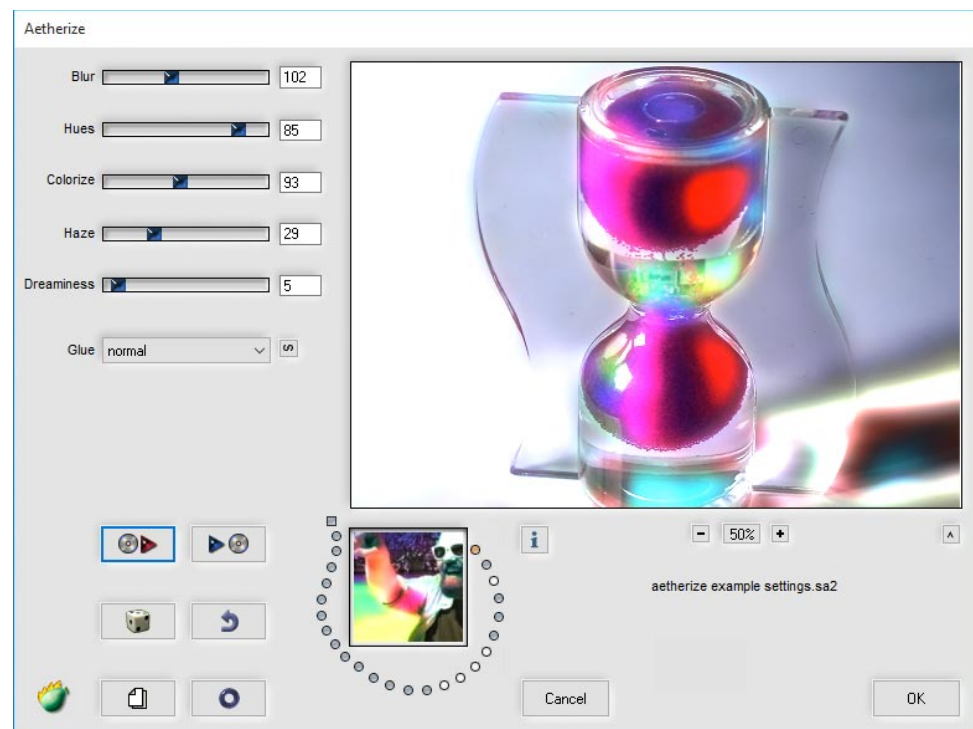
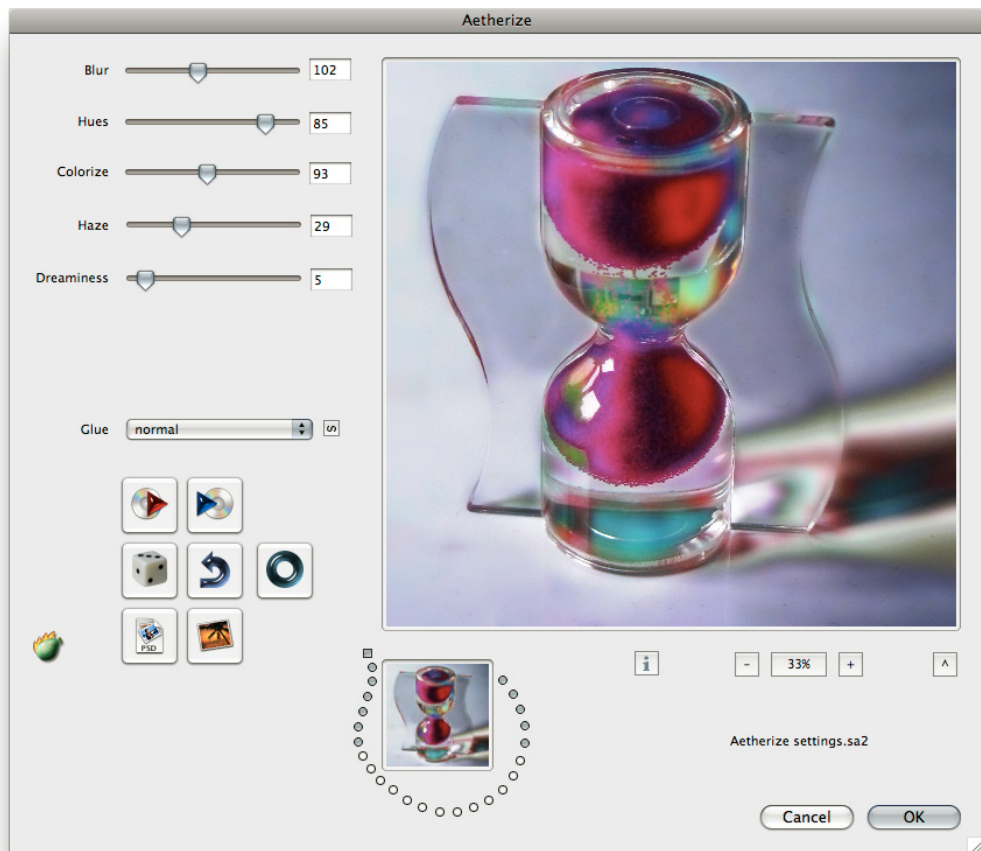
On Windows, it will be similar to C:/Program Files/Adobe/Adobe Photoshop/Plug-ins.

You must restart Photoshop before it will notice new plug-ins.

The plug-in is now installed. To use it, open any image and select an area. From the menus, choose Filter > Flaming Pear > Aetherize.

## Quick start

When you invoke Aetherize, a dialog box will appear.



If you just want to see some effects quickly, click the dice button until you see an effect you like; then click OK.

Using the dice is the easiest way to use Aetherize. If you want to hand-tune your own effects, it helps to learn the controls:

Blur

Hues

Colorize

Dreaminess

Haze

Aetherize's capabilities and controls are explained below.

## Sliders

Aetherize recolors and blurs the image, and then combines the result with the original in various ways.



original image

**Blur** controls how far colors will bleed from their sources.



an effect with small blur



same effect with big blur

**Hues** sets the number of new colors introduced into the picture.



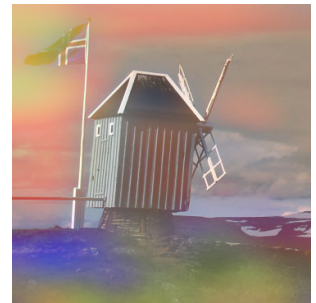
different hues

**Colorize** sets how much the new colors will replace the original colors.



more colorized

**Haze** influences the contrast to produce a gauzy look.



more haze

**Dreaminess**, when set to high values, will produce stark contrasts and vivid colors.



more dreaminess

## Things to try

### Soft focus

Try these settings:

Blur 30

Hues 12

Colorize 100

Haze 50

Dreaminess 13



original image

You'll get a soft-focus effect that you can adjust in several ways:

Changing Blur changes the sharpness of the edges in the image.

Changing Hues will introduce new colors not present in the original.

Changing Colorize will affect the saturation of those new colors.

Increasing Haze will produce a gauzier look.

Increasing Dreaminess will produce starker colors.



soft focus

### Rainbow

Use the same settings as for soft focus, above, but turn the Hues up to 100.

Settings like these will produce colored stripes in the sky, in softly lit fleshtones, in washes of bounce light on walls, or anywhere a gradient of brightness appears.

The Blur control will change the width of the stripes; Dreaminess will strongly change the colors.



rainbow



### Moody sky

Set Blur 25, Hues to 40, and the other sliders to zero.

If you change the Hues or Dreaminess, new colors will appear.



moody sky

### Subtle color influences

This example uses the same settings as for the rainbow effect, but with a much larger Blur and a smaller Colorize setting so that faint washes of color appear. You can use this effect to add life to drably colored images.



subtle color influences



## Other controls

**Dice:** This randomizes the settings. Click it as much as you want to see different effects.



dice

**Reset:** Gives you the factory settings.



reset

**Glue:** Lets you combine the result image with the original, instead of replacing it. The **next-glue** button advances to the next glue mode.



next glue

**Send to photo manager:** Sends the result to Photos (on Macintosh).



send to photo manager

**Export to PSD:** Renders the result to a .psd file.



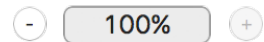
export to PSD

**Make Gallery:** Builds a web page showing all the presets in a folder that you choose.



make gallery

**Plus, % and minus buttons:** If the selected image area is bigger than the preview, these buttons let you zoom in and out. Drag the preview to move it.



Plus, %, minus

**Load preset:** Presets are files containing settings. To load one, click this button and browse for a preset file.



load preset

**Save preset:** When you make an effect you like, click this button to save the settings in a file.



save preset

**Undo** backs up one step.



undo

**Info:** briefly explains the controls.



info

Three more buttons:

**OK:** Applies the effect to your image.

**Cancel:** Dismisses the plug-in, and leaves the image unchanged.

**Register:** Allows you to type in a registration code and remove the time limit from the demo.

## Memory dots

Although you can [save your settings permanently to files](#), you can also stash settings in memory dots.

Click an empty dot to stash the current settings in it.

Click a full dot to retrieve its settings.

Hover the mouse over a dot to see what it contains.

Option-click to erase a dot on Macintosh.

Right-click to erase a dot on Windows.

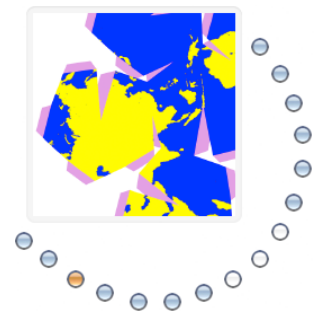
If a dot is orange, Aetherize's currently using that dot's settings.

Dots remember their contents until you erase them. If you'd rather make a temporary dot that forgets when you exit Aetherize, control-click it. Temporary dots are square.

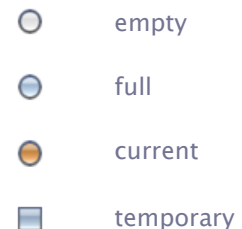
When you start Aetherize, it puts the starting settings in a temporary dot. That way it's easy to start over without exiting the plug-in.

On Mac, you can drag-and-drop settings files from the central memory well.

You can build a web page showing how the current image would look with every memdot setting. Just option-click (Mac) or right-click (Windows) on the big memdot image.



memory dots



## **Version history**

### **Version 1.96**

Improves the interface on high-DPI Windows monitors.

### **Version 1.95**

Restores compatibility with Mac OS X 10.8.

### **Version 1.94**

Restores 32-bit compatibility on Mac OS X.

### **Version 1.93**

Minor updates for OS X El Capitan.

### **Version 1.92**

Fixes an issue with registration codes.

### **Version 1.91**

Restores compatibility with Mac OS X 10.7.

### **Version 1.90**

Macintosh version works in both 32- and 64-bit modes.

### **Version 1.89**

Macintosh version works in Retina resolution.

### **Version 1.88**

Fixes previews in 16-bit color.

**Version 1.86**

Fixes issues with stability and misaligned freeform selections in previews.

**Version 1.85**

64-bit version for Macintosh.

**Version 1.8**

64-bit version for Windows.

**Version 1.72**

Fixes stripes that can appear on large images.

**Version 1.7**

Adds convenience features to the interface. The Mac version is resizable.

**Version 1.6**

Fixes a Macintosh problem where the plug-in could have bad settings or crash when installed on a machine for the first time.

**Version 1.55**

Universal binary for Macintosh. Works as a Smart Filter in Adobe Photoshop CS3 Macintosh. Fixes a Windows problem where the plug-in wouldn't remember its registration when it was installed in one user account but activated in another.

**Version 1.4**

Works in 16-bit color.

**Version 1.3**

Recordable as a Photoshop action.

**Version 1.25**

Adds more glue modes and the next-glue button.

**Version 1.22**

Adds more glue modes and fixes a crash that could happen when using the menus under Windows XP.

**Version 1.21**

Adds new glue modes: Color, Luminance, Linear Light, and Pin Light. Fixes the appearance of text in the interface when running under Mac OS X 10.2.3 .

**Version 1.2**

Adds previews in the preset browser.

**Version 1.1**

Adds an Undo button.

**Version 1.0**

First release.

## How to purchase

You can place an order online [here](#). A secure server for transactions is available.

## Questions

The software, documentation, and supporting materials are made by Flaming Pear Software. Answers to common technical questions appear on our [support page](#), and free updates appear periodically on the [download page](#).

For bug reports and technical questions, please write to [support@flamingpear.com](mailto:support@flamingpear.com).

©2017 Flaming Pear Software